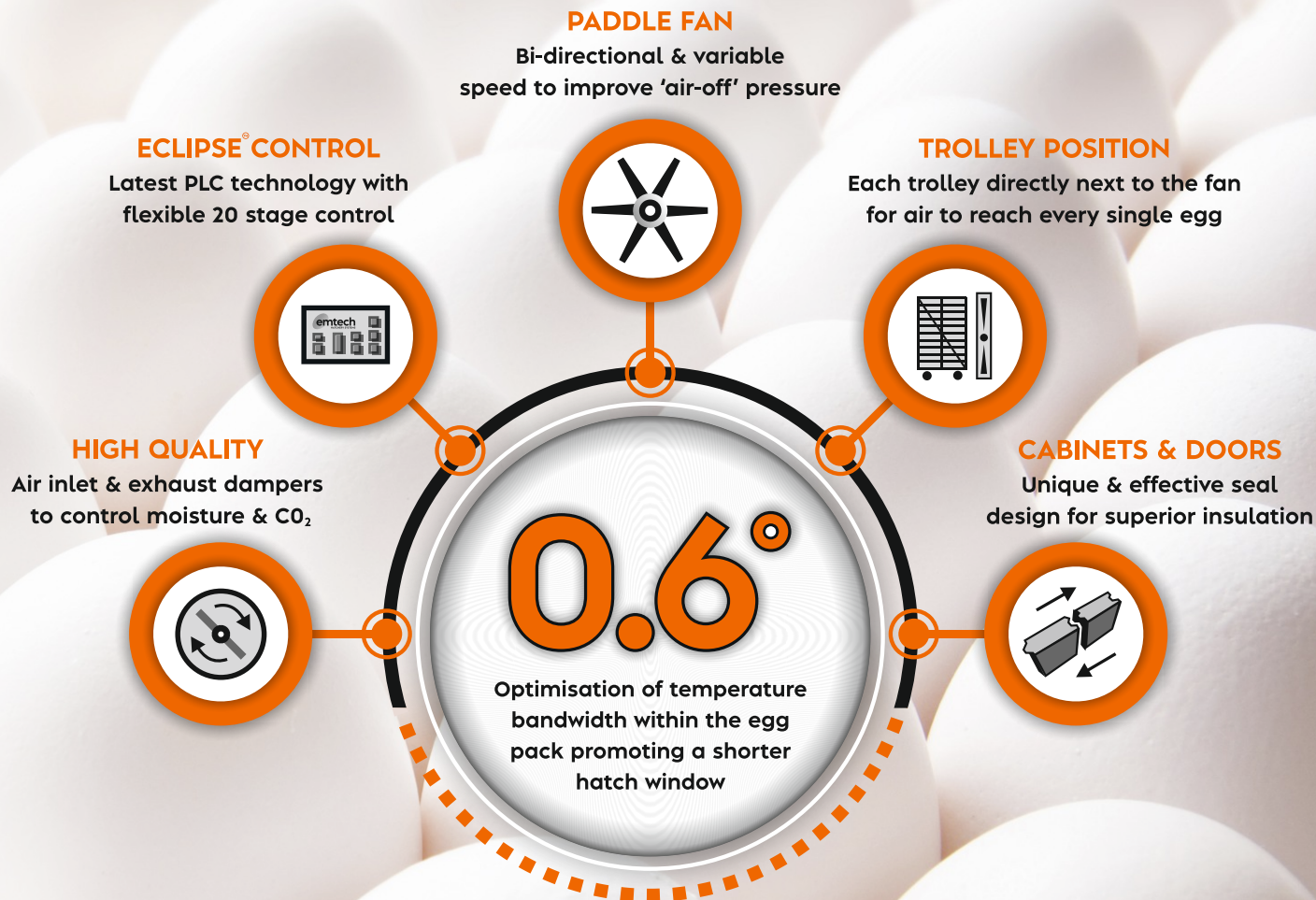




Many innovations claim to improve chick quality, but none truly address the stability of **temperature** and **airflow** across EVERY egg.

EmTech's ability to rethink incubator design from the ground up has led to significant improvements that 'set new standards' with a temperature bandwidth no greater than **0.6°C**

Please visit our website for more details or speak to one of our sales representatives.



**'zeropointsix'**